

Alabama Head Injury Task Force

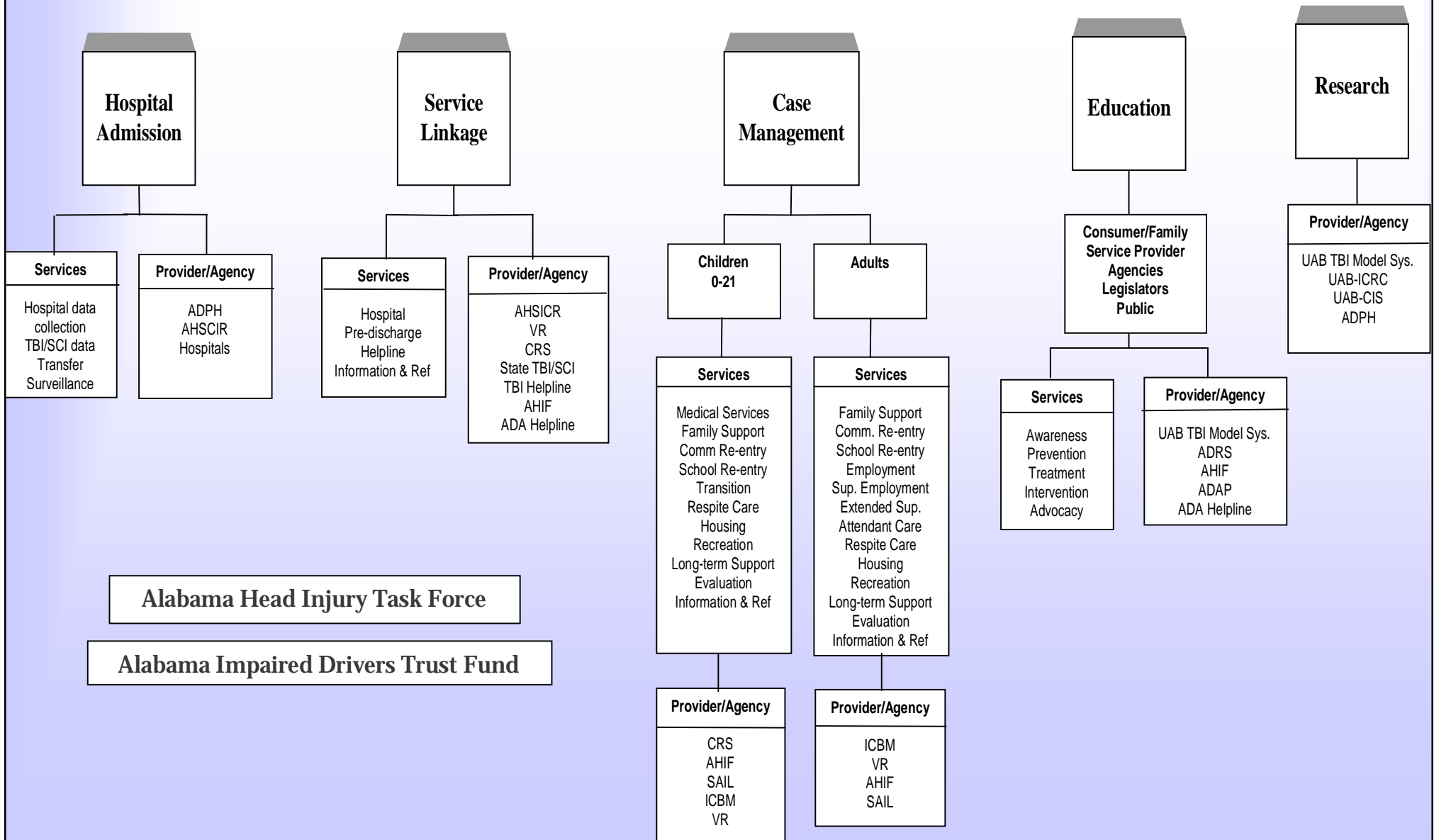
- ◆ Alabama Department of Rehabilitation Services
- ◆ Alabama Coalition Against Domestic Violence
- ◆ Mobile Infirmary Medical Center
- ◆ Alabama Head Injury Foundation
- ◆ UAB Injury Control Research Center
- ◆ Alabama Department of Senior Services
- ◆ Alabama Child Death Review Systems
- ◆ Alabama Council for Developmental Disabilities
- ◆ Spain Rehabilitation Center
- ◆ Auburn University at Montgomery
- ◆ Alabama Early Intervention System
- ◆ Alabama Medicaid Agency
- ◆ Adult Services of Mental Illness
- ◆ ADRS Children's Rehabilitation Services
- ◆ ADRS Lakeshore Rehabilitation Center
- ◆ Alabama Department of Mental Health & Mental Retardation
- ◆ ADRS State of Alabama Independent Living Services
- ◆ Alabama Disabilities Advocacy Program
- ◆ Children's Hospital
- ◆ Alabama Department of Public Health
- ◆ Alabama Department of Education
- ◆ Alabama Department of Insurance
- ◆ UAB School of Public Health
- ◆ Bureau of Family Health Services
- ◆ Pediatric Neuropsychological
- ◆ Parents/Consumers

Alabama Impaired Drivers Trust Fund

- ◆ Alabama Department of Insurance
- ◆ Alabama Head Injury Foundation
- ◆ Alabama Medical Association
- ◆ Governor
- ◆ Alabama Department of Public Health
- ◆ Alabama Department of Human Resources
- ◆ Epilepsy Foundation of North Central Alabama
- ◆ Alabama Medicaid Agency
- ◆ Member of the Alabama Senate
- ◆ Alabama Department of Education
- ◆ Alabama Council for Developmental Disabilities
- ◆ Alabama Department of Mental Health & Mental Retardation
- ◆ UAB Injury Control Research Center
- ◆ Alabama Head Injury Task Force
- ◆ Alabama Coalition of Citizens with Disabilities
- ◆ Member of the House of Representatives

Alabama System of Care for People with TBI

Emergency Medical Services



Hospital Admission

Service Linkage

Case Management

Education

Research

Services

Provider/Agency

Services

Provider/Agency

Children 0-21

Adults

Services

Services

Services

Provider/Agency

Provider/Agency

Alabama Head Injury Task Force

Alabama Impaired Drivers Trust Fund

Provider/Agency

Provider/Agency

CRS
AHIF
SAIL
ICBM
VR

ICBM
VR
AHIF
SAIL

UAB TBI Model Sys.
ADRS
AHIF
ADAP
ADA Helpline

UAB TBI Model Sys.
UAB-ICRC
UAB-CIS
ADPH

Core TBI Service System

- ◆ Alabama Head and Spinal Cord Injury Registry
- ◆ Interactive Community-Based Model
- ◆ Children's Rehabilitation Service
- ◆ Alabama Head Injury Foundation

Role of the Mobile Resource Team

- ◆ Arrange for/provide services
- ◆ Coordinate community resources and services
- ◆ Educate community service providers re: TBI
- ◆ Explore methods of accessing community services/resources for people with TBI
- ◆ Develop new resources in coordination with existing services
- ◆ Represent TBI in the community
- ◆ Access local financial resources/grants

Partners

- ◆ State of Alabama Independent Living Program (SAIL)
- ◆ Vocational Rehabilitation
- ◆ Early Intervention

HRSA TBI State Demonstration Grants

- ◆ 1999 - Children with TBI
- ◆ 2002 - Students with TBI
- ◆ 2003 - TBI and Psychiatric Disorders
- ◆ 2004 - TBI and Domestic Violence

Children with TBI: Issues

- ◆ No system or funding for children with TBI
- ◆ No or few service providers with training
- ◆ Concerns re: developmental issues and TBI

Children with TBI: Activities and Results

- ◆ PASSAGES, a model of service delivery from hospital to home, community and school was developed for children and youth with TBI
- ◆ Hospital D/C model was developed
- ◆ Six Care Coordinators are employed by Children's Rehabilitation Service to implement PASSAGES
- ◆ A care coordinator is located in The Children's Hospital to coordinate the D/C model statewide

Students with TBI: Issues

- ◆ Under-identification or misidentification of students with TBI
- ◆ Considerable overlap between diagnosis of TBI and LD and emotional disabilities
- ◆ Educators, teachers, counselors, special educators do not have experience and/or training in TBI
- ◆ Families are unaware of school issues related to disability

Students with TBI: Activities and Results

- ◆ Brain CD Training Tool was developed and distributed
- ◆ A process for screening students with possible TBI was instituted
- ◆ Educators are aware of resources for students with TBI
- ◆ CRS TBI Care Coordinators are designated as point of contact for educators concerned about students with (possible) TBI

TBI and Psychiatric Disorders: Issues

- ◆ Misdiagnosis/misidentification
- ◆ Limited appropriate treatment
- ◆ Lack of trained service providers

TBI and Psychiatric Disorders: Activities and Results

- ◆ Training was provided resulting in awareness of TBI/MH issues
- ◆ BRAIN II CD ROM Training Tool

Domestic Violence and TBI: Issues

- ◆ Lack of awareness of TBI among DV “community”
- ◆ Lack of identification of TBI

Domestic Violence and TBI: Activities and Results

- ◆ Education of DV and TBI service providers
- ◆ Development of a referral process with MRT designated as the point of entry
- ◆ Modification in data systems
- ◆ Development of a screening protocol
- ◆ Development of a Training Tool Kit