



Agency for Healthcare Research and Quality

Advancing Excellence in Health Care

www.ahrq.gov

Research on Women's Healthcare at the Agency for Healthcare Research and Quality

Shakeh J. Kaftarian, Ph.D.

**Senior Advisor,
Women's Health and Gender Research**

Meeting of the IOM Committee on Women's Health Research
February 24, 2009



Overview

- n AHRQ Mission
- n Core Business
- n Research on Women's Healthcare
- n Knowledge Transfer
- n Gap Analysis



AHRQ Mission

Improve the quality, safety, efficiency and effectiveness of health care for all Americans





By ...

- n Research on improving healthcare outcomes
- n Translating healthcare research into practice



Core Business

- n Knowledge creation and synthesis
- n Knowledge dissemination
- n Knowledge implementation and use



Inclusion of Women in Research

- n A review criterion
- n Lifespan approach





Research on Women

All aspects of healthcare, including:

- n** Enhancing response of healthcare systems to women's needs;
- n** Understanding differences between healthcare needs of women and men;
- n** Understanding and eliminating disparities in healthcare; and
- n** Empowering women to make better healthcare decisions



Goal: Address Diverse Healthcare Needs of Women Through Generations





Portfolios

- n Comparative Effectiveness
- n Prevention and Care Management
- n Value
- n Health Information Technology
- n Patient Safety
- n Innovations/Emerging Issues



Topics on Women's Health

Include but not limited to:

- n** Cardiovascular diseases and treatment
- n** Cancer screening and treatment
 - breast, cervical, ovarian and other
- n** Reproductive health
 - pregnancy, birth outcomes, hysterectomy
- n** Chronic illnesses and treatment
 - diabetes, HIV, mental/behavioral problems



Topics on Women's Health

cont'd

- n Health impact of violence
- n Healthcare access and cost
- n Impact of medications
- n Data sources for gender research
- n Emerging healthcare issues



Examples of Findings (2005-2008)

- n** Risks for maternal complications (e.g., gestational diabetes) may be lower after bariatric surgery compared to risks in obese women
- n** Young women of low to normal weight with GI complaints should be screened for eating disorders
- n** Race/ethnicity appear to have an effect on c-section delivery outcomes
- n** Women are prescribed more drugs than men during their reproductive years



Knowledge Transfer

Program Goals:

- n Enhance knowledge of users about available research, products, tools
- n Assist target groups implement tools, research, products
- n Gain feedback on successes/barriers of implementation
- n Case studies showing how audiences implemented/used products



Options

- n Lite bite menu
- n Cafeteria menu
- n Gourmet menu
- n Smorgasbord menu



Marketing Example: Impact of Bariatric Surgery on Fertility

- n Product background
- n Key messages
- n Targeted audience
- n Electronic distribution
- n Exhibits
- n Slides



Marketing Example: Impact of Bariatric Surgery on Fertility

- n Outreach to general press
- n Outreach to minority press
- n Outreach to consumer media
 - Primary private sector
 - Secondary private sector
- n Outreach to Government agencies



Marketing Example: Impact of Bariatric Surgery on Fertility

- n Audio-visual news releases
- n Web marketing
- n Speaking opportunities
- n Peer-reviewed journal article



Implementation Example

Medicaid Medical Directors Learning Network

n Products of interest:

- Cesarean Delivery on Maternal Request
- Off-Label Use of Atypical Antipsychotics



Gaps in Healthcare Research

Approach:

- n** Persistent and large disparity measures in our databases, through:
 - National Healthcare Disparity Report
 - National Healthcare Quality Report



AHRQ's National Reports on Quality and Disparities

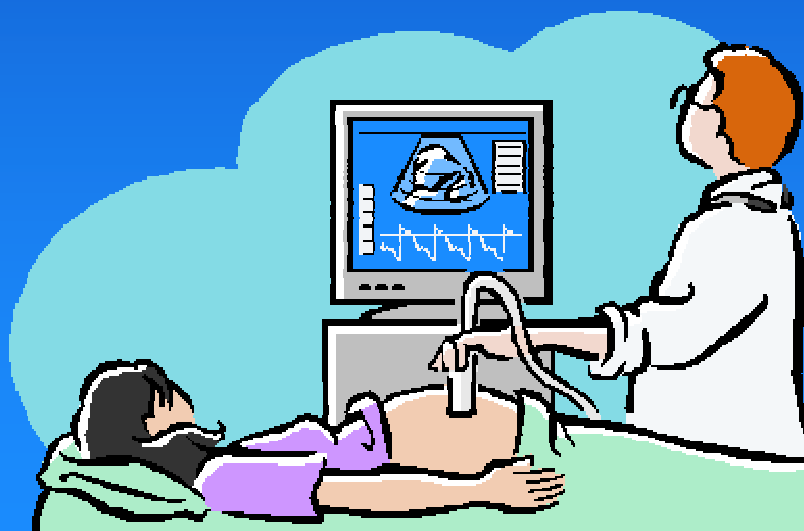
- n **National Healthcare Quality Report** tracks the healthcare system through quality measures (e.g., percentage of heart attack patients who received recommended care when they reached the hospital)
- n **National Healthcare Disparities Report** summarizes healthcare quality and access among various racial, ethnic and income groups and other priority populations (e.g., women)





Data-based Gap Analysis Revealed...

Disparities in prenatal care impacting minority women in poor settings





Case Study to Address Gap

- n** Under-resourced settings, where hi-risk patients, poorest quality and safety are prevalent
- n** Explicate the needs of these settings and patients for research and action
- n** Identify opportunities and challenges for implementing quality improvement strategies
- n** Develop and present a report to a panel of experts



Future Research Agenda

- n** Panel will develop agenda for research and action
- n** Include agenda in funding opportunities
- n** Award grants, understand results, disseminate and provide additional support for implementation of findings



Contact Information

Shakeh J. Kaftarian, Ph.D.
(301) 427-1550

jackie.kaftarian@ahrq.hhs.gov