

H1N1 Flu and Children

11 June 2009

**Richard J. Hatchett, MD
NIH/NIAID**

1957 Pandemic

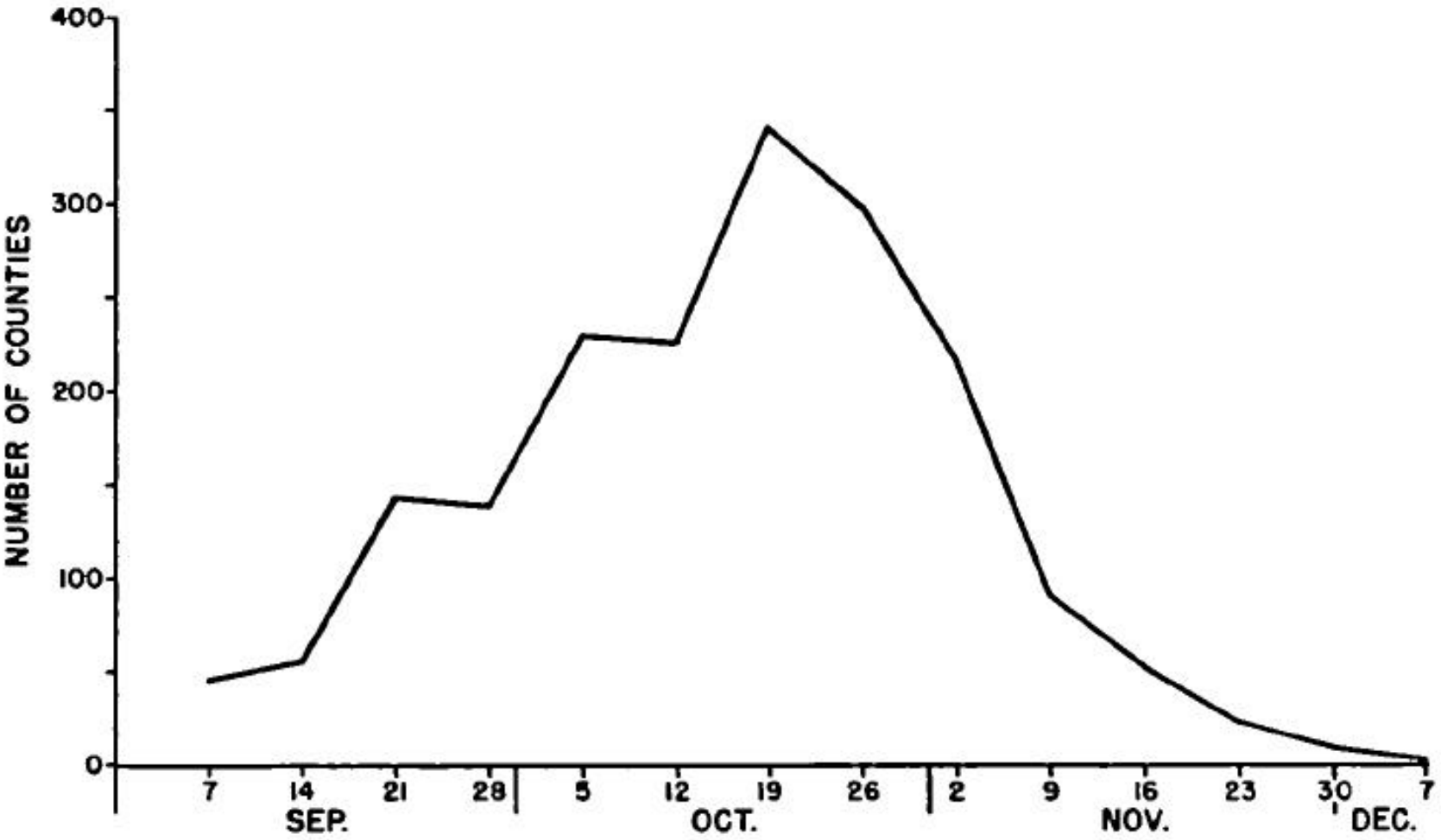
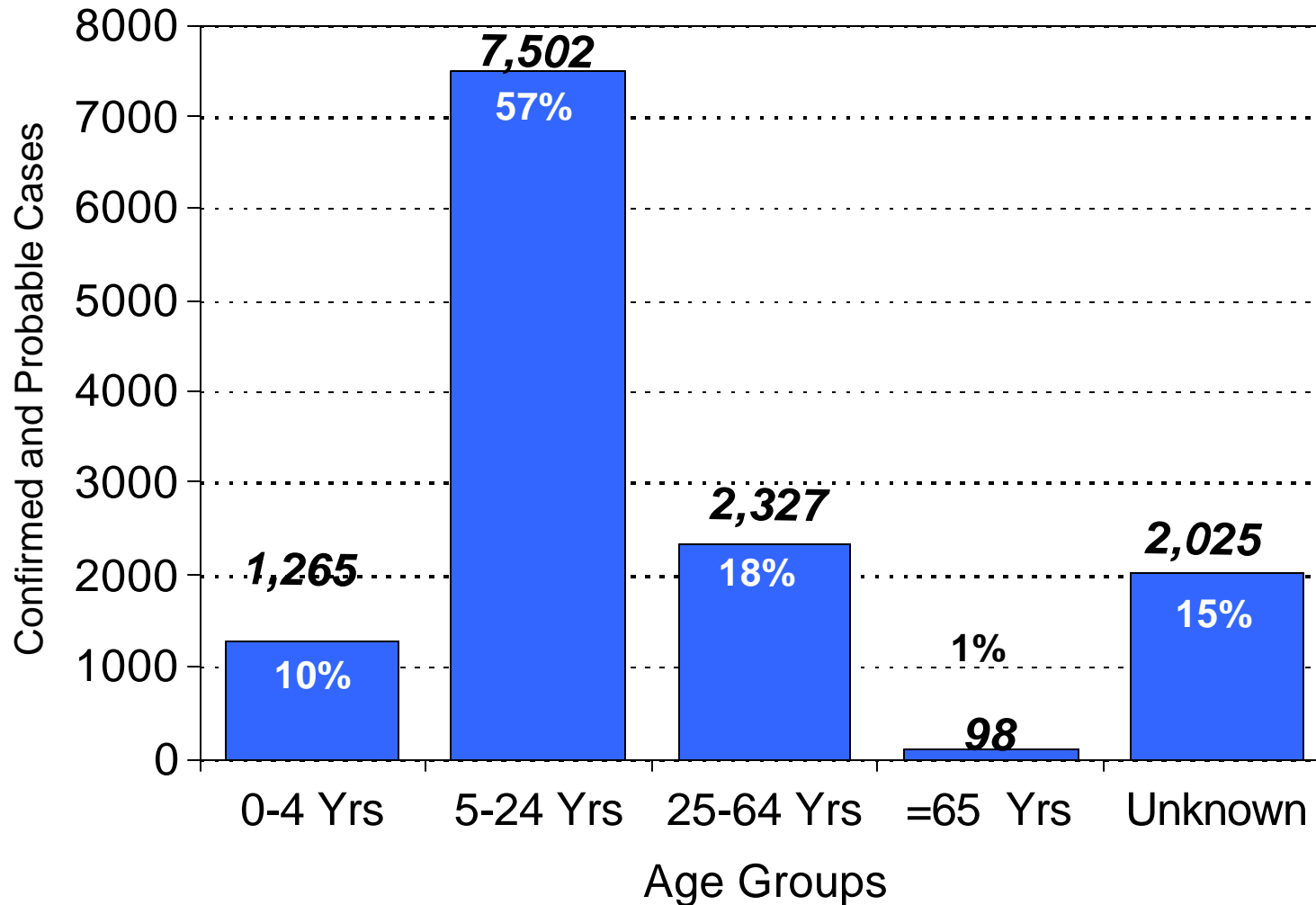


FIGURE 3. Influenza by week of onset in the counties of the United States, September 1 through December 7, 1957.

Trotter Y, et al. Asian influenza in the United States, 1957-1958. Am J Hyg 1959;70:34-50.

Epidemiology/Surveillance

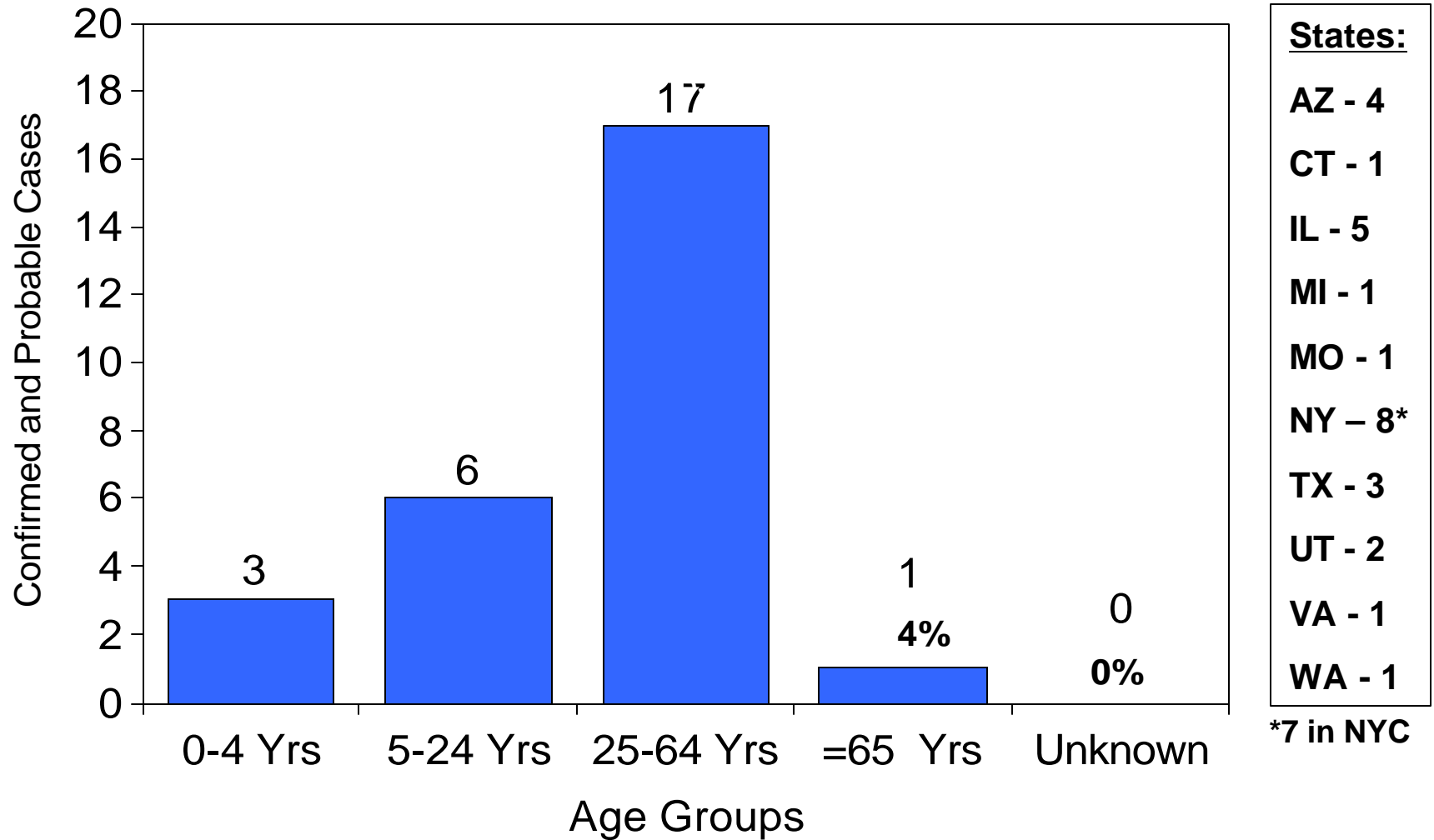
Confirmed and Probable Novel Influenza A (H1N1) Cases by Age
Data reported as of 05 JUN 2009 1100 EDT (n=13,217)



Slide provided by the U.S. Centers for Disease Control and Prevention

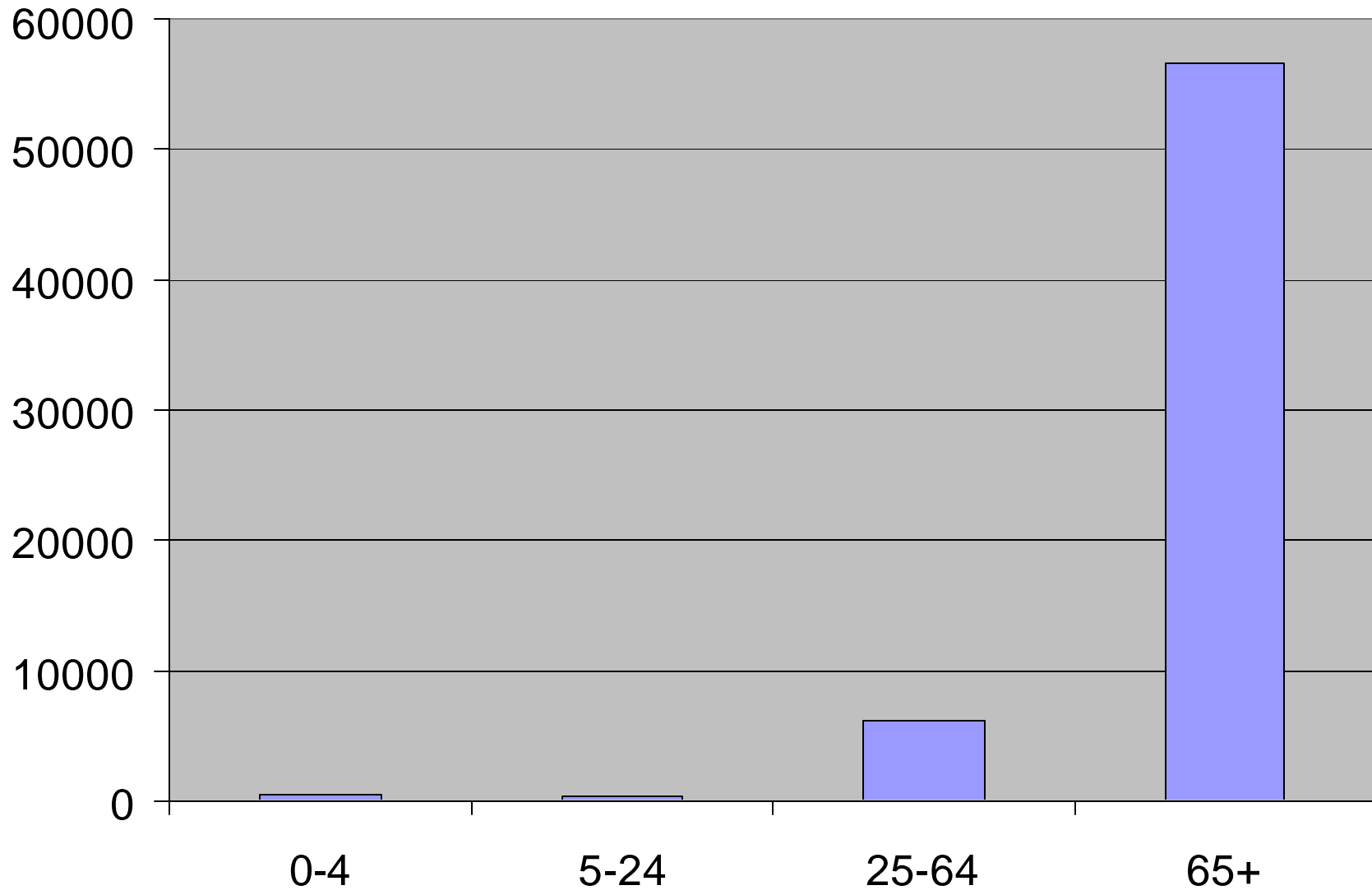
Confirmed and Probable Novel Influenza A (H1N1) Deaths by Age

Data Reported as of 05 JUN 2009 1100 EDT (n=27)



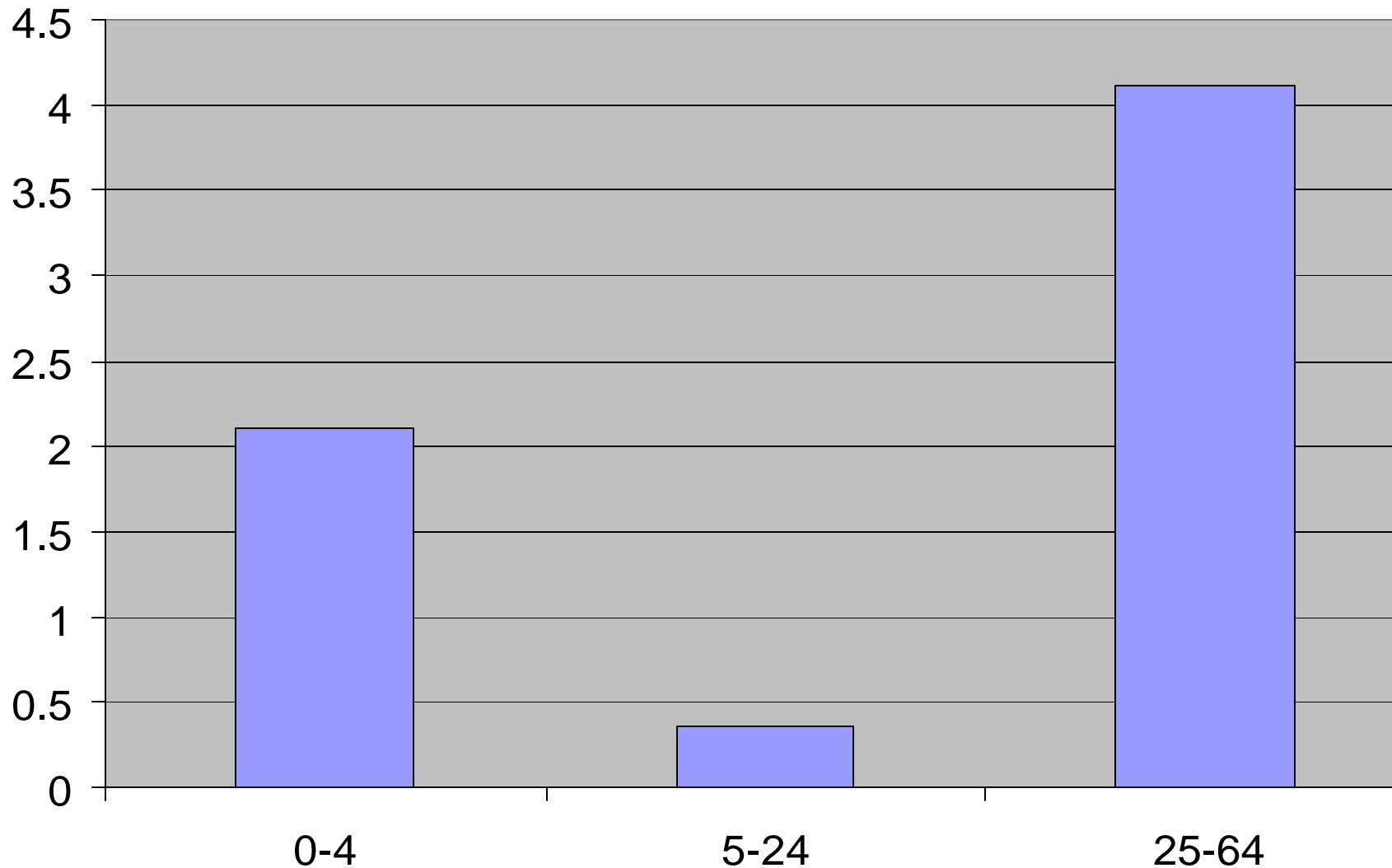
Slide provided by the U.S. Centers for Disease Control and Prevention

Average Annual P&I Deaths (2000-2004)



Deaths from 113 Selected Causes, by 5-Year Age Groups, Race, and Sex: United States, 2000-2004
Available at http://www.cdc.gov/nchs/datawh/statab/unpubd/mortabs/gmwk210a_10.htm

P&I Deaths/100,000 (Mean 2000-2004)



Deaths from 113 Selected Causes, by 5-Year Age Groups, Race, and Sex: United States, 2000-2004
Available at http://www.cdc.gov/nchs/datawh/statab/unpubd/mortabs/gmwk210a_10.htm
adjusted for population groups per U.S. Census Estimates available at
<http://www.census.gov/popest/national/asrh/NC-EST2008-sa.html>