



**Climate Change and Community  
Actions:  
Lessons from Los Angeles**

Martha Dina Arguello



# TRUE COST

ECONOMICS AS A DISCIPLINE has never even  
considered the implications of a no-growth  
STEADY STATE ECONOMY.





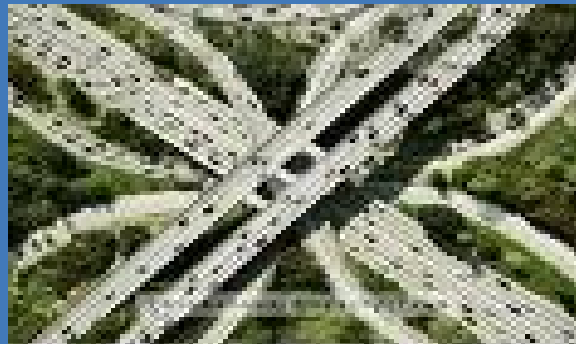
# Moving Cargo and Freight







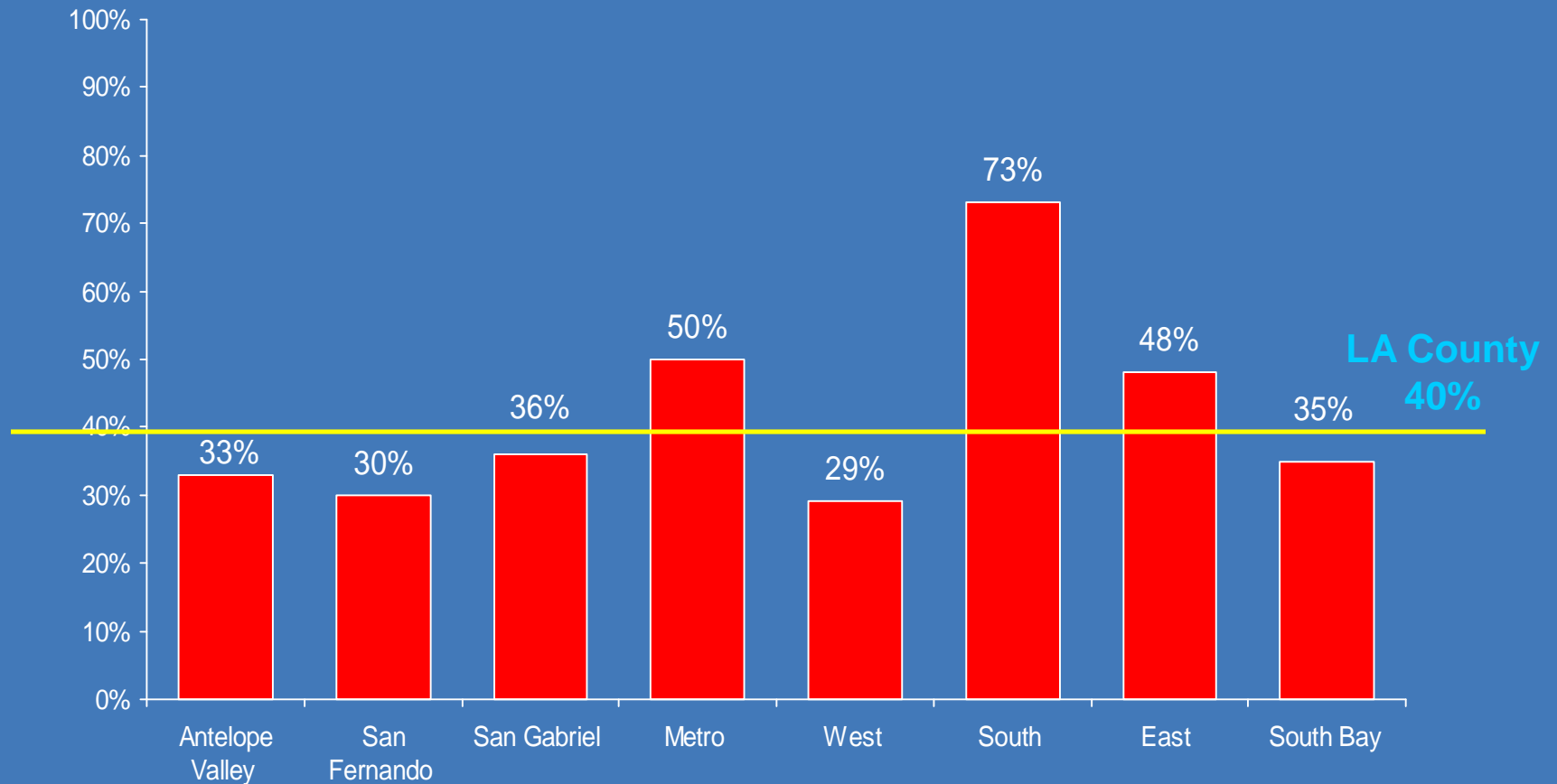




© 2004-2011  
© Autodesk, Inc.  
www.autodesk.com

Frank Stella, Bridge

## Percentage of Adults (Age 18 years and older) living below 200% of Federal Poverty Level, by Service Planning Area, Los Angeles County, 1999

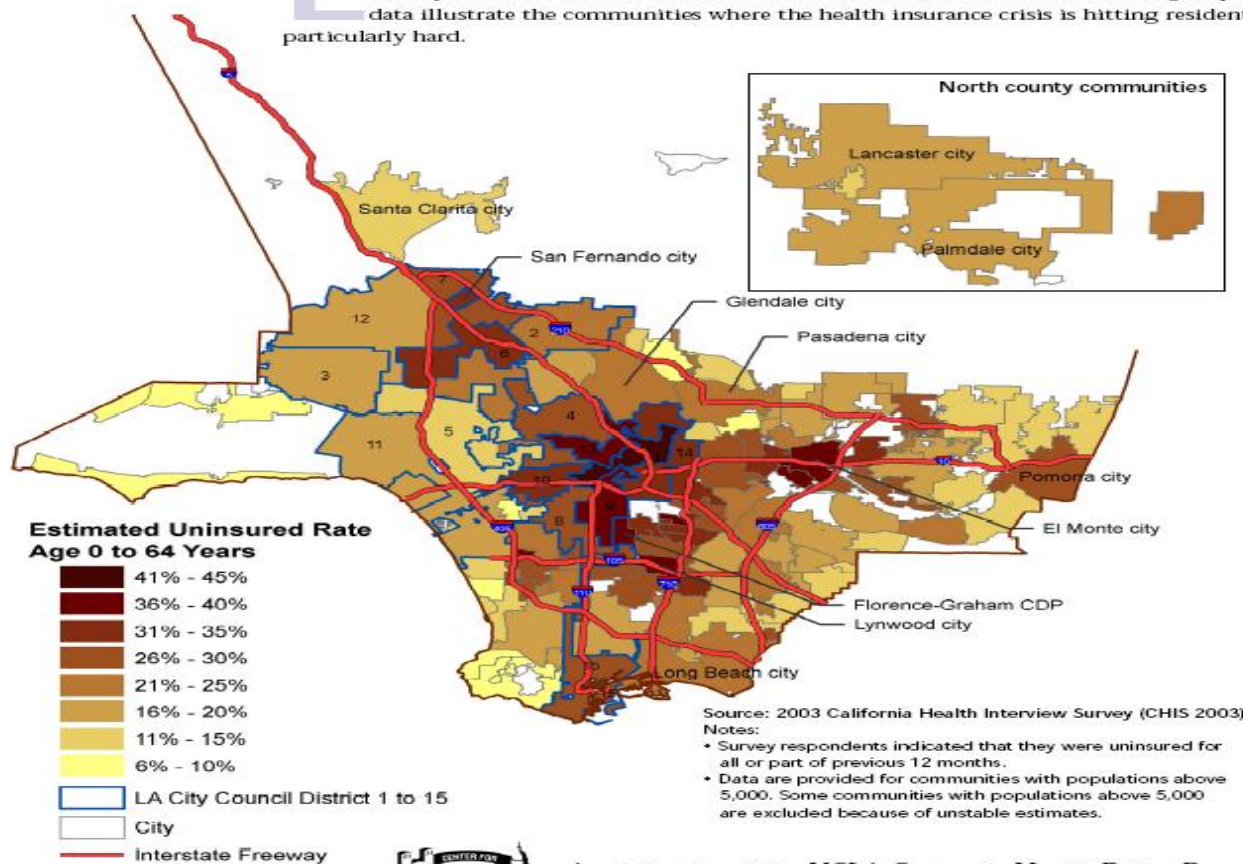


## Life Expectancy at Birth by Sex and Race/Ethnicity, Los Angeles County, 1998



## Concentrations of Uninsured Residents in Los Angeles County Communities

Lack of health insurance is a problem that strikes every community in Los Angeles County. But some communities are more affected than others. The following map and data illustrate the communities where the health insurance crisis is hitting residents particularly hard.



A publication of the UCLA Center for Health Policy Research  
[www.healthpolicy.ucla.edu](http://www.healthpolicy.ucla.edu)

## Trends in the Leading Causes of Death, Los Angeles County, 1991-2000

<u>Cause of death</u>	Rate (per 100,000)		<u>Percent change</u>
	<u>1991</u>	<u>2000</u>	
Coronary heart disease	280.4	187.4	-35.5%
Stroke	64.1	48.9	-23.8%
Pneumonia/Influenza	42.9	40.6 *	-5.3%
Lung cancer	49.8	36.9	-25.8%
Chronic respiratory disease	34.1	32.7	-4.0%
Diabetes	14.6	21.7	+48.2%
Unintentional Injury	29.2	20.8	-28.6%
Chronic liver disease	15.4	12.7	-17.5%
Homicide	20.1	9.8	-51.3%
Suicide	11.5	7.6	-34.3%
HIV/AIDS	23.2	5.3	-77.1%
Alzheimer disease	3.7	4.8 *	+28.3%

\* 1998 rate





**Creating a new economy**

- Developing the health infrastructure we need to deal with the health impacts of climate change



