

Evidence on Prevention

Arthur J. Reynolds, Chin-Chih Chen, and Janette Herbers
University of Minnesota

National Research Council
Board on Children, Youth, and Families
June 30, 2009

CLS Examples on Mobility

1. Robustness testing
2. Indirect effects
3. Child-Parent Center PK-3 evidence
4. Mobility contribution to economic returns

CLS Sample Description

Cohort of 1,539 Kindergartners born in 1979-1980 who attended publicly funded early childhood programs for children at risk in Chicago public schools.

Data collected annually from many sources with 90% or higher recovery into adulthood. Mobility measured starting in K from school records and supplemented with parent/student reports.

Threshold Impacts for School Moves and Related Factors

Grade 8 reading

1 move K-8	-1.9
2 moves K-8	-2.7
3+ moves K-8	-5.7*
Magnet school	6.4*
Private school	2.8
Out of Chicago	-0.6
High family risk	-5.7*

Note. * $p < .05$

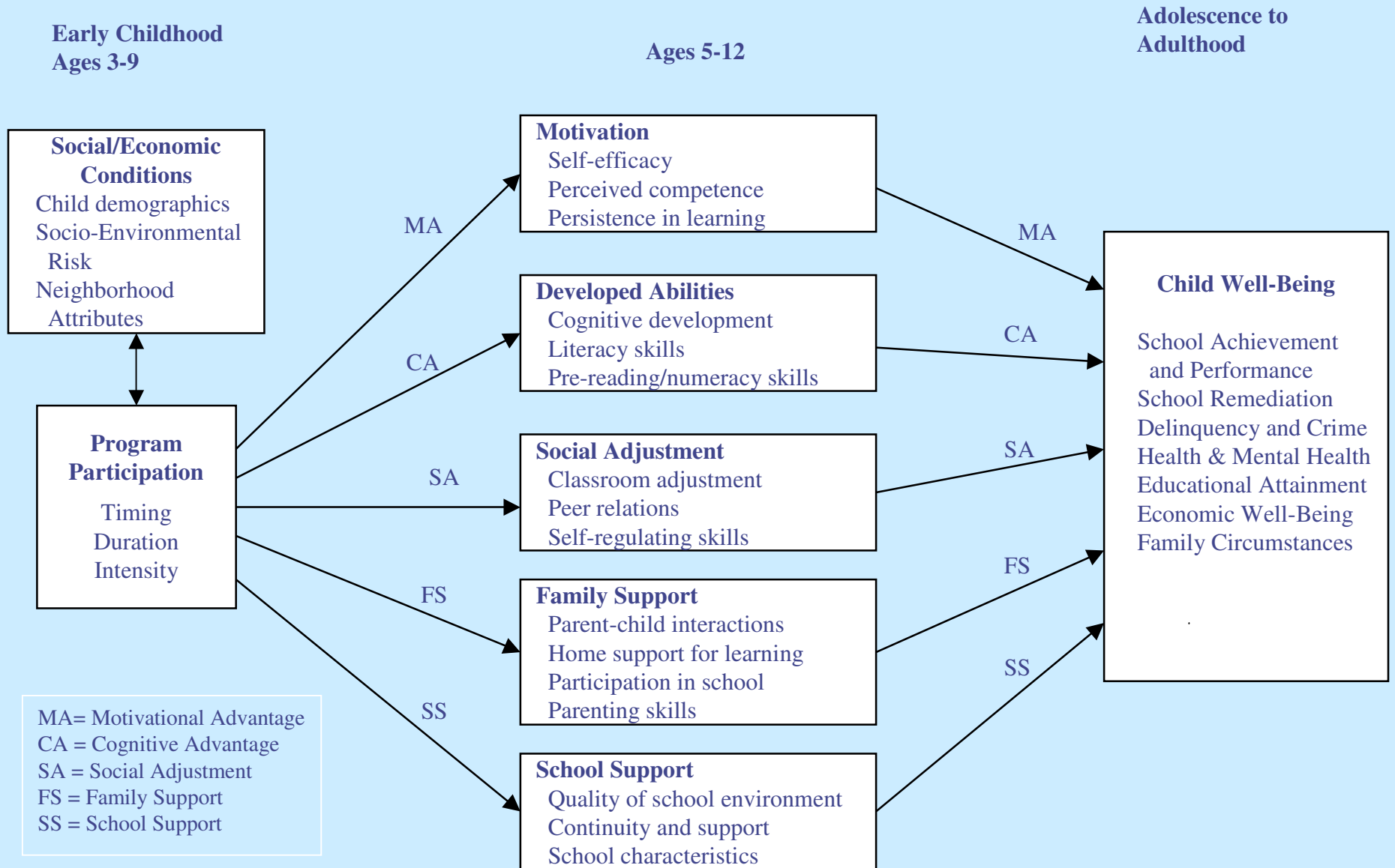
Threshold Impacts for School Moves on Educational Attainment

*Highest grade-
Age 25*

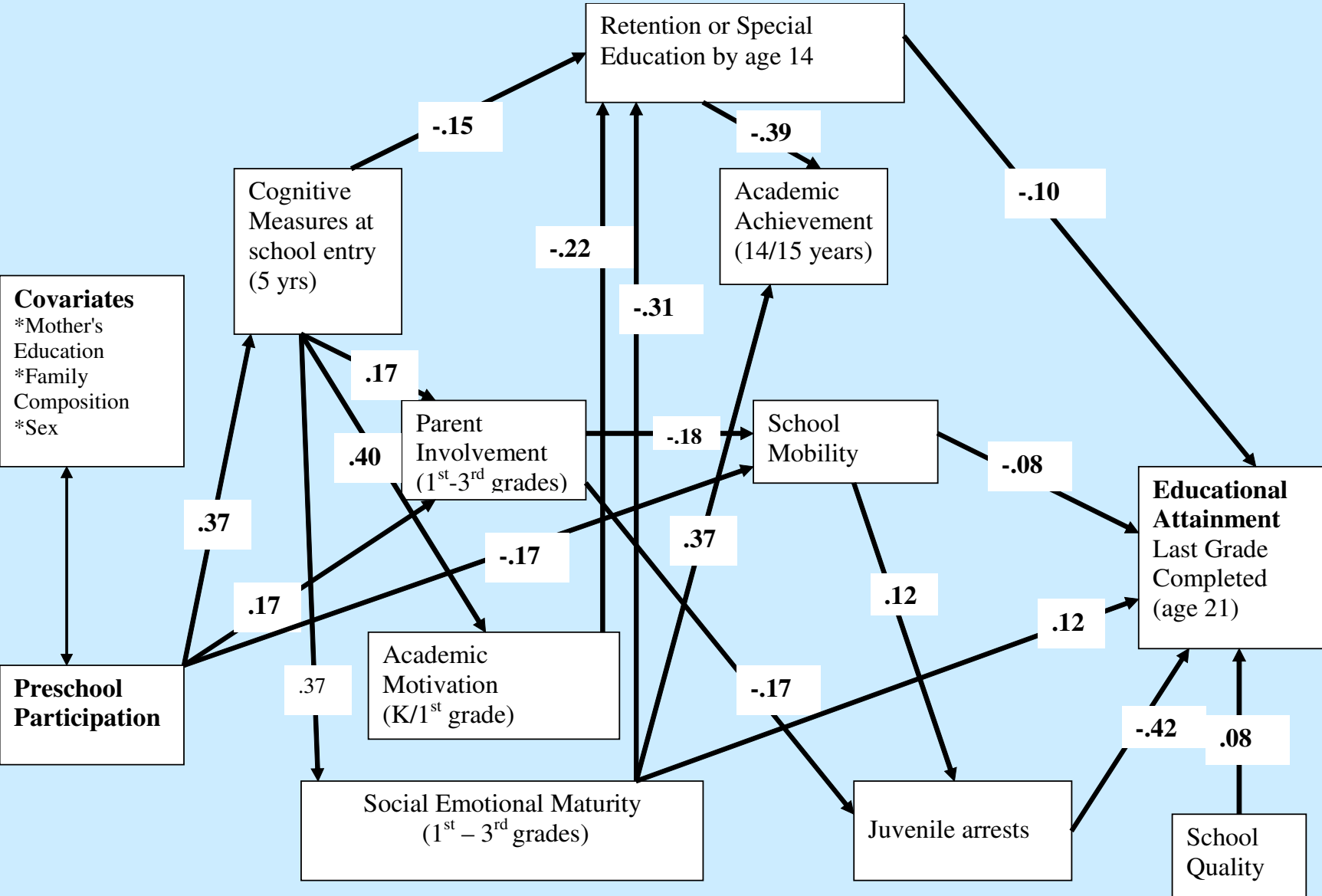
1 move K-12	-0.08
2 moves K-12	-0.17
3 moves K-12	-0.25*
4+ moves K-12	-0.32*
Residential moves	-0.10

Note. *p < .05

Paths to Well-Being Affected by Early Childhood Experiences



Child-Parent Centers



PK-3 Education Programs

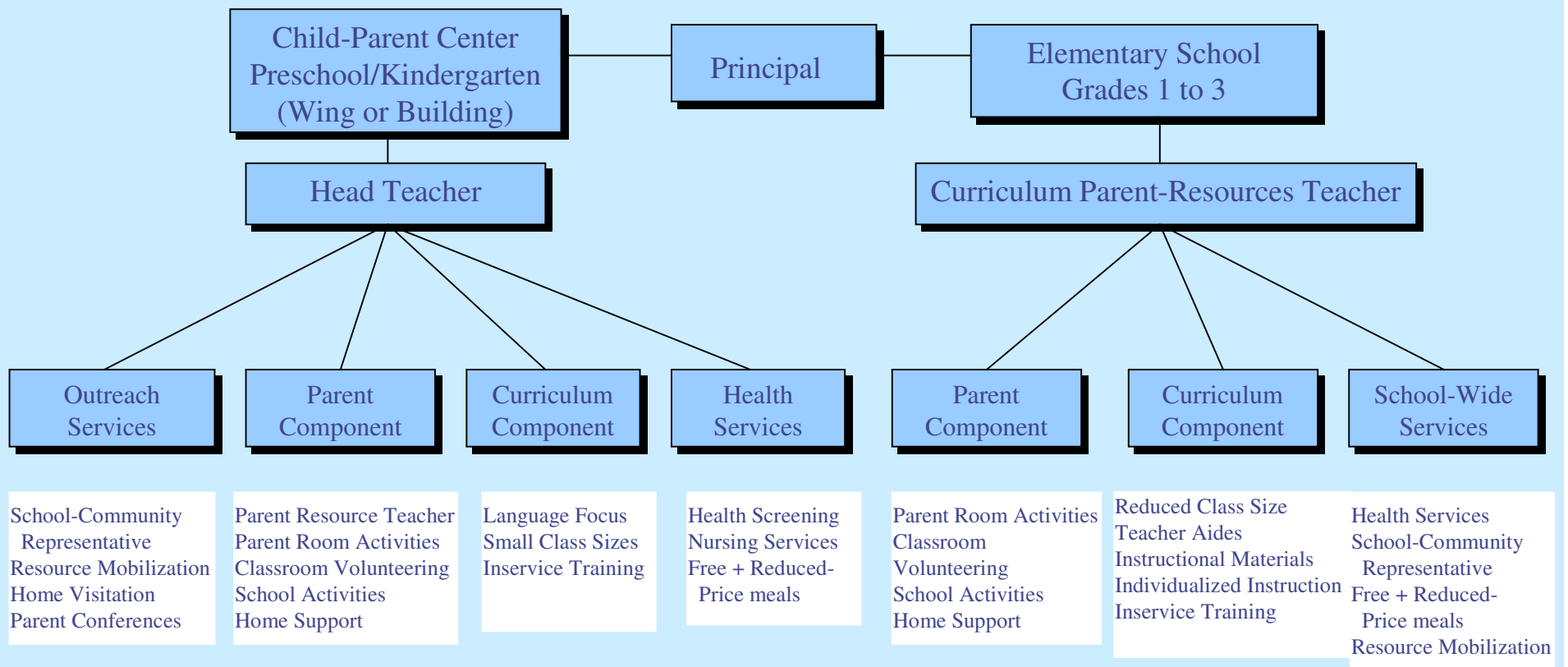
Programs

Planned interventions and services beginning during any of the first 5 years of life and continue up to third grade

Practices

Elements of PK-3 programs such as preschool, full-day kindergarten, class sizes, curriculum alignment, parent involvement.

Child-Parent Centers



Age 3 ————— To —————> Age 9

CPC Impacts on School Moves

Prog. Group	2+ moves grade 4-8	3+ moves grade 4-12
Extended	-13.8%	-9.9%
School-age	-5.8%	-6.7%
Preschool	-9.3%	-3.9%

Note. Marginal effects from probit regression. See Table 9 and Appendix E for model information.

Mediational Contribution of Mobility to Age-26 CPC Returns

	NPV	B/C ratio
Preschool	\$84,556	10.57
School age	\$11,706	3.97
Extended	\$9,397	8.35
Mobility preschool contribution	\$10,524	1.19

Note. Mobility link exclusive to educational attainment and crime benefits. See Table 10. Values are 2008 dollars

Research Directions

1. Measure U. S. school moves annually.
2. Assess linear versus threshold effects.
3. Assess child and family subgroups.
4. Examine move type, reasons, and frequency within and across ages.
5. Examine processes & mediators.
6. Fully assess indirect and context effects.
7. Improve evidence on programs & policies.